

## THONBURI HEALTHCARE GROUP PCL.

Thonburi Healthcare Group Public Company Limited offers healthcare services such as medical treatment, diagnosis, and surgeries. In addition to this they supply medical equipment, provide residential care services, and develop software for hospital management. The company operates private hospitals in Thailand, both in Bangkok and other parts of the country, through direct management, affiliated firms as well as joint ventures.



### + MEDICAL SERVICES



### + HEALTHCARE SOLUTION PROVIDER



### + OTHER BUSINESS



### CONTACT US



#### THONBURI HEALTHCARE GROUP PUBLIC COMPANY LIMITED

34/1 Itsaraphap Road, Ban Chang Lo  
sub-district, Bangkok Noi district,  
Bangkok 10700

Tel: +66 (0)2 487 2000, +66 95 3705728  
Website: [www.thg.co.th](http://www.thg.co.th)



#### Investor Relations Contact

Tel: +66 95 3705728  
Email: [ir@thg.co.th](mailto:ir@thg.co.th)

### Milestones



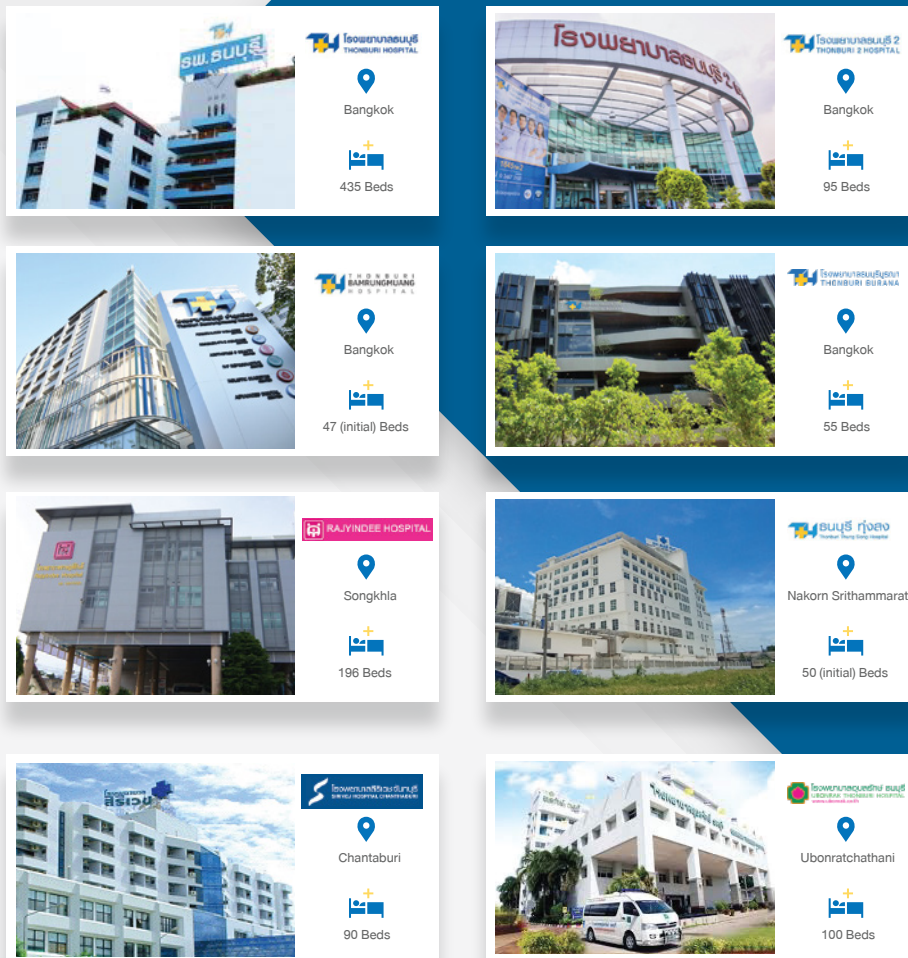
Thonburi Healthcare Group  
Public Company Limited

FACT SHEET  
Q3/2021  
Performance

**Disclaimer :** The information contained herein is being furnished on a confidential basis for discussion purposes only and only for the use of the recipient, and may be subject to completion or amendment through the delivery of additional documentation. Except as otherwise provided herein, this document does not constitute an offer to sell or purchase any security or engage in any transaction. The information contained herein has been obtained from sources that The Thonburi Healthcare Group Public Company Limited ("THG") considers to be reliable; however, THG makes no representation as to, and accepts no responsibility or liability for, the accuracy or completeness of the information contained herein. Any projections, valuations and statistical analyses contained herein have been provided to assist the recipient in the evaluation of the matters described herein; such projections, valuations and analyses may be based on subjective assessments and assumptions and may utilize one among alternative methodologies that produce differing results; accordingly, such projections, valuations and statistical analyses are not to be viewed as facts and should not be relied upon as an accurate representation of future events. The recipient should make an independent evaluation and judgment with respect to the matters contained herein.



# HOSPITAL BUSINESS



# HEALTHCARE SOLUTION PROVIDER



Check up / Treatment at home  
Jin Wellbeing County, mixed-use development  
Thonburi Health Village  
Exclusive distributor dental supply brands

**Jin Wellbeing County Project Progress**  
as at end of Sep 2021



**100%**  
completion



**138** units transferred

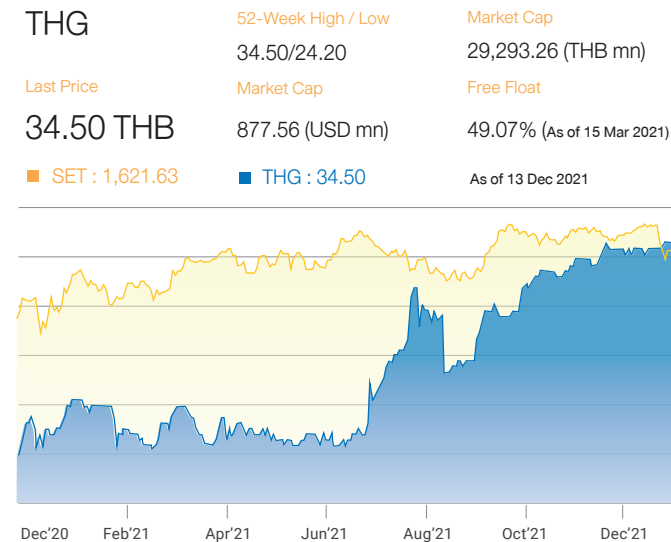
**3** units transferred in 3Q21

# OTHER BUSINESS

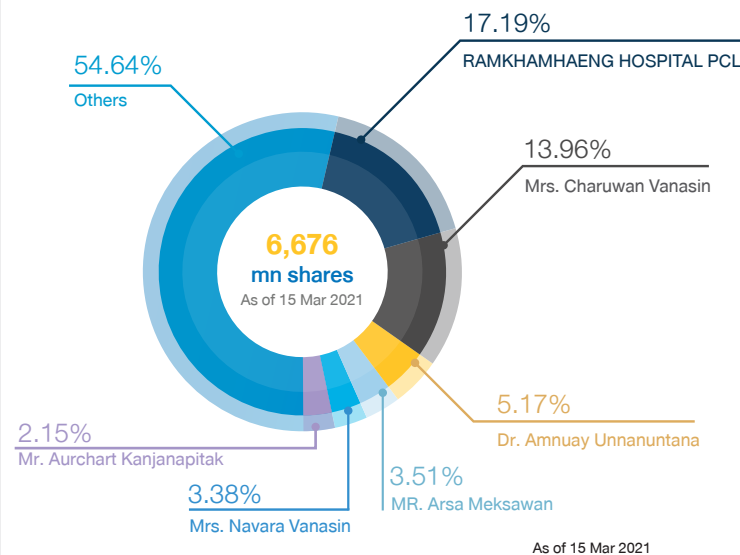
**Software Development**  
to support internal operation

**Project Development**

## STOCK INFORMATION



## SHAREHOLDING STRUCTURE



## DIVIDEND

On 23 April, AGM approved the proposed dividend payment of THB 0.40 per share for 2020 performance.

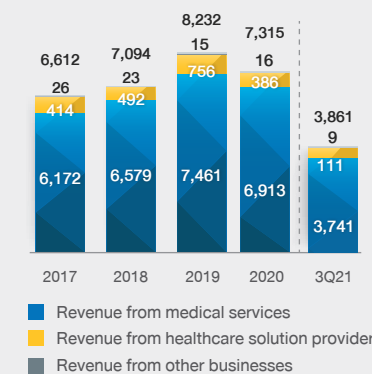
**THB 0.30/share**  
XD date 12 Mar 21  
Payment date 21 May 21

**Dividend policy:**  
no less than 40 % of its total net profit according to the separate financial statements after yearly legal reserves and with consideration of financial positioning, cash flow, liquidity, investment plan and other factors in accordance with the Board of Directors' opinion.

## FINANCIAL HIGHLIGHTS

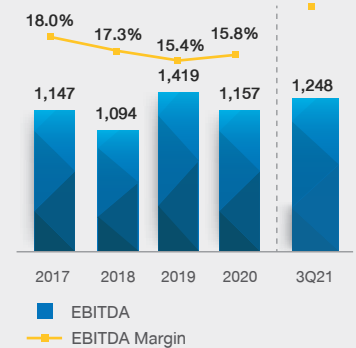
### REVENUE

Unit: THB mn



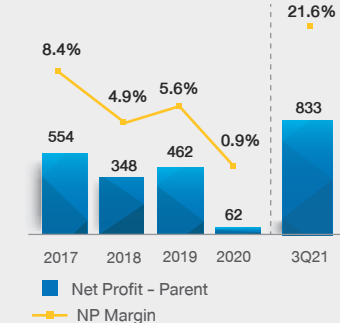
### EBITDA

Unit: THB mn



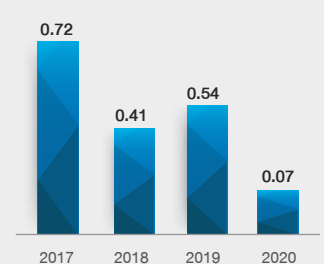
### NET PROFIT - PARENT

Unit: THB mn



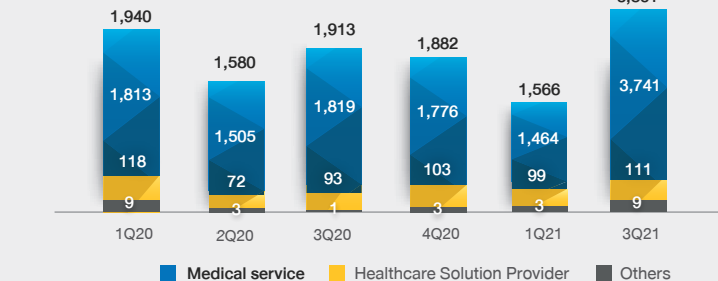
### EARNING PER SHARE

Unit: THB

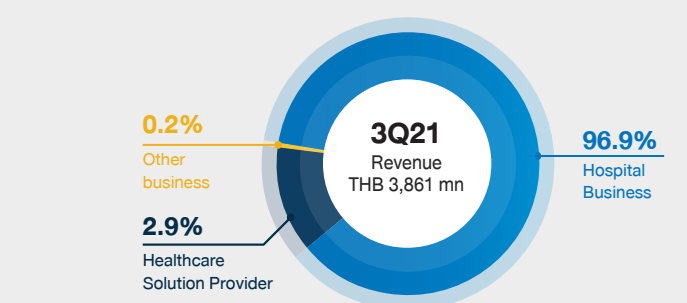


### QUARTERLY REVENUE

Unit: THB mn



### REVENUE BREAKDOWN



### GEARING RATIO

