

THONBURI HEALTHCARE GROUP PCL.

Thonburi Healthcare Group Public Company Limited offers healthcare services such as medical treatment, diagnosis, and surgeries. In addition to this they supply medical equipment, provide residential care services, and develop software for hospital management. The company operates private hospitals in Thailand, both in Bangkok and other parts of the country, through direct management, affiliated firms as well as joint ventures.



+ MEDICAL SERVICES



+ HEALTHCARE SOLUTION PROVIDER



+ OTHER BUSINESS



CONTACT US



THONBURI HEALTHCARE GROUP PUBLIC COMPANY LIMITED

34/1 Itsaraphap Road, Ban Chang Lo
sub-district, Bangkok Noi district,
Bangkok 10700

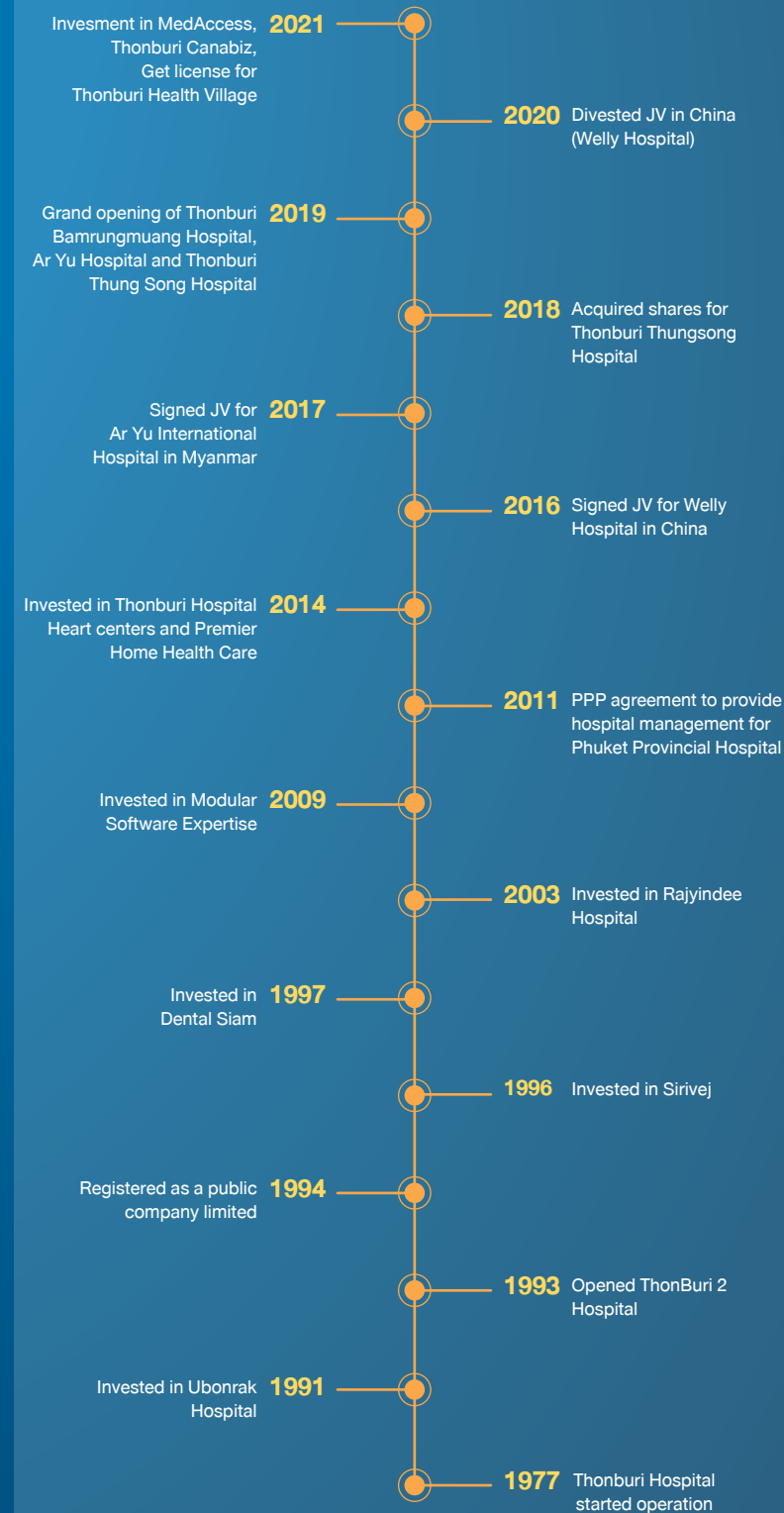
Tel: +66 (0)2 487 2000 ext. 2785
Website: www.thg.co.th



Investor Relations Contact

Tel: +66 (0)2 487 2000 ext. 2785
Email: ir@thg.co.th

Milestones



Thonburi Healthcare Group
Public Company Limited

FACT SHEET
Q4 /2021
Performance

Disclaimer : The information contained herein is being furnished on a confidential basis for discussion purposes only and only for the use of the recipient, and may be subject to completion or amendment through the delivery of additional documentation. Except as otherwise provided herein, this document does not constitute an offer to sell or purchase any security or engage in any transaction. The information contained herein has been obtained from sources that The Thonburi Healthcare Group Public Company Limited ("THG") considers to be reliable; however, THG makes no representation as to, and accepts no responsibility or liability for, the accuracy or completeness of the information contained herein. Any projections, valuations and statistical analyses contained herein have been provided to assist the recipient in the evaluation of the matters described herein; such projections, valuations and analyses may be based on subjective assessments and assumptions and may utilize one among alternative methodologies that produce differing results; accordingly, such projections, valuations and statistical analyses are not to be viewed as facts and should not be relied upon as an accurate representation of future events. The recipient should make an independent evaluation and judgment with respect to the matters contained herein.

HOSPITAL BUSINESS

8

Domestic Hospitals

1

Overseas Hospital

1

Management for Hospital and Medical Center

3

Heart Centers



Bangkok



435 Beds



Bangkok



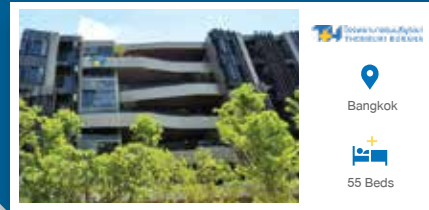
95 Beds



Bangkok



127 Beds



Bangkok



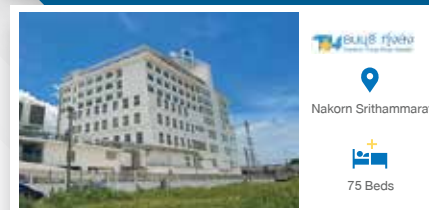
55 Beds



Songkhla



196 Beds



Nakorn Si Thammarat



75 Beds



Chantaburi



90 Beds

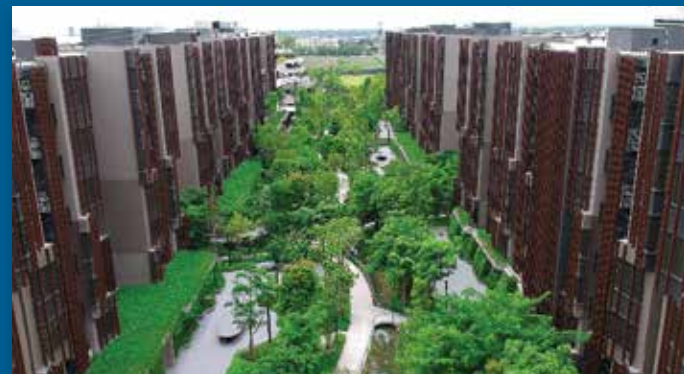


Ubonratchathani



100 Beds

HEALTHCARE SOLUTION PROVIDER



Check up / Treatment at home
Jin Wellbeing County, mixed-use development
Thonburi Health Village
Exclusive distributor dental supply brands

Jin Wellbeing County Project Progress
as at Dec21



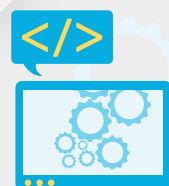
100%
completion



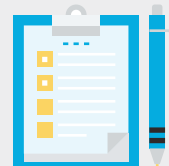
144 units transferred

18 units transferred
in YE2021

OTHER BUSINESS



Software Development
to support internal operation



Project Development

STOCK INFORMATION

THG

52-Week High / Low

95.00 / 24.20

Market Cap

80,297.54 (THB mn)

Last Price

96.00 THB

Market Cap

2,391.23 (USD mn)

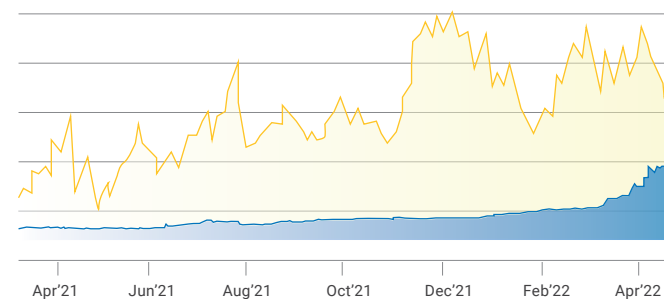
Free Float

49.07% (As of 11 April 2022)

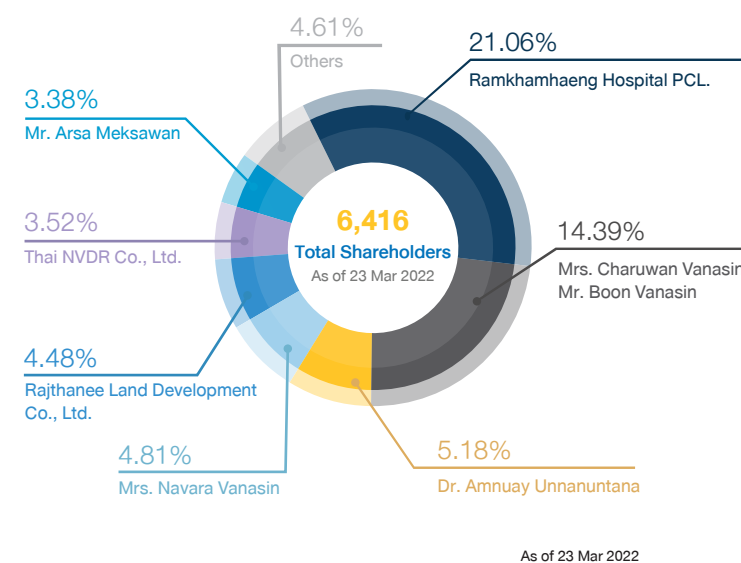
SET : 1,680.12

THG : 96.25

(As of 11 April 2022)



SHAREHOLDING STRUCTURE



DIVIDEND

On 23 Apr 21, AGM approved dividend payment of THB 0.30 per share for 2020 performance.
On 26 Jan 22, BOD approved dividend payment of THB 0.40 per share for 9M2021 performance.

THB 0.30/share
XD date 12 Mar 21
Payment date 21 May 21

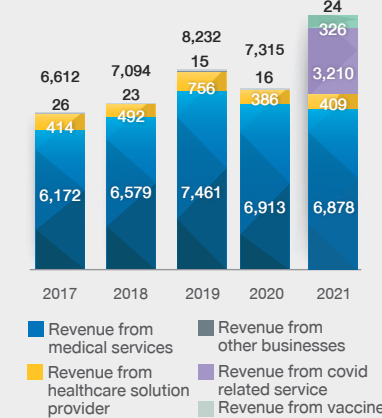
THB 0.40/share
XD date 11 Feb 22
Payment date 25 Feb 22

Dividend policy:
Dividend policy:
Not less than 40% of net profit according to separate financial statements

FINANCIAL HIGHLIGHTS

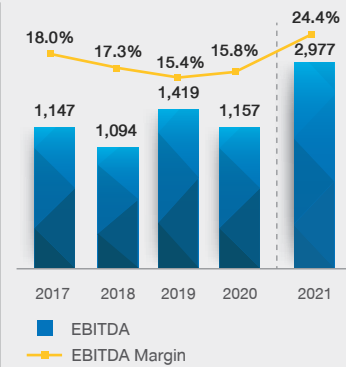
REVENUE

Unit: THB mn



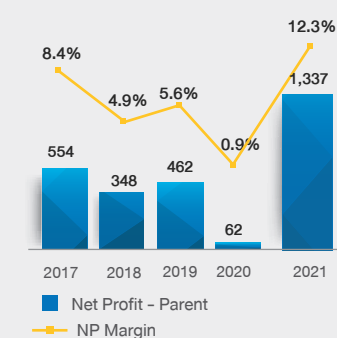
EBITDA

Unit: THB mn



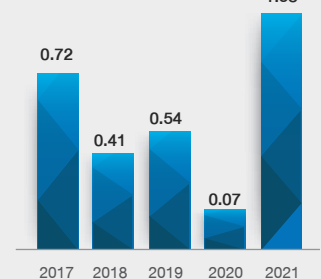
NET PROFIT - PARENT

Unit: THB mn



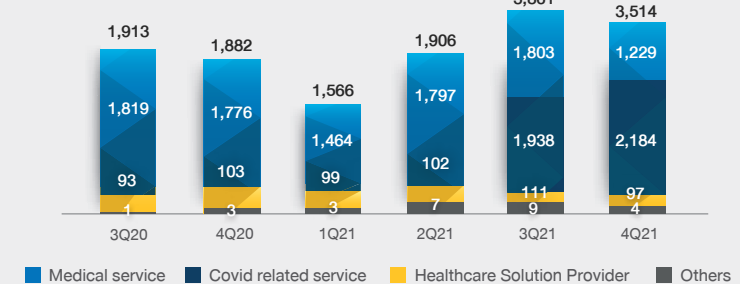
EARNING PER SHARE

Unit: THB

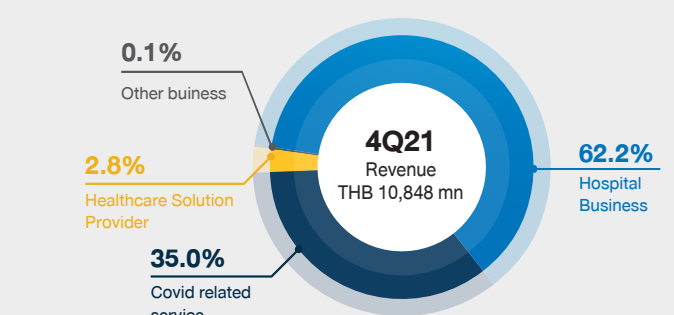


QUARTERLY REVENUE

Unit: THB mn



REVENUE BREAKDOWN



GEARING RATIO

